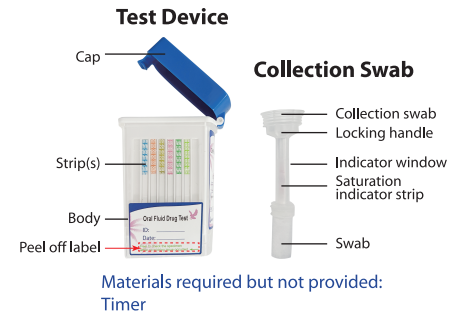




Quick Reference Instructions

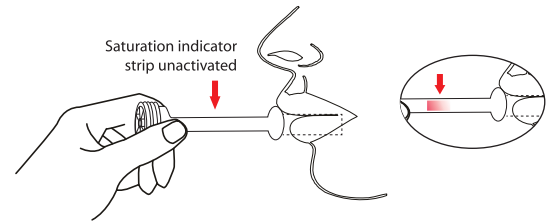
UScreen+ Oral Cube

- Before use, allow test kit to reach room temperature (15-30°C/59-86°F).
- Do not place anything in mouth at least 10 minutes before specimen collection.
- The oral fluid specimen must be collected using the collection swab provided with the test kit. No other collection devices can be used with this test device.
- Read the instructions carefully before starting the test.



1 Specimen Collection

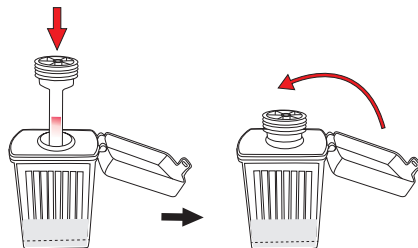
Remove the collection swab from packaging. Start Timer. Relax the mouth and insert the collection swab into the mouth. The collection swab must be horizontal throughout the collection process. Using a circular motion, gently swab both cheeks 5-10 times, gums 5-10 times, and surface of tongue 5-10 times, actively swab the inside the mouth, top of tongue, and between cheek and gum until a red color on the saturation indicator strip appears in the indicator window of collection swab. **Important:** Do not bite, suck or chew on the collection swab. It is critical that the collection swab is held horizontally during collection otherwise there will be insufficient saliva collected although the indicator turns red. During collection of the oral fluid, relax the mouth while swabbing the tongue and check as this will aid in the collection of the oral fluid.



Note: Refer to Notes and Troubleshooting if the saturation indicator strip does not activate after 4 minutes. If after 7 minutes, color has not appeared, proceed with the test below.

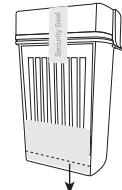
2 Insert Collection Swab into Test Device

Remove test device from sealed pouch and place upright on a clean, flat surface. **Gently and slowly** insert the collection swab into the test device, swab first, until it reaches the bottom of the test device. Push the cap until it locks in place and is secure. **Important:** Keep test device upright while inserting collection swab. Once the collection swab is locked in place, the test device is airtight, tamper evident and ready to be shipped to a lab for confirmation if required. Alternatively, the test device can be disposed of.



3 Start Timer

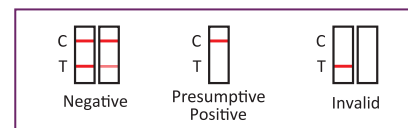
Keep test device upright on a flat surface until the test is complete. Start timer. **Important:** If any test strips do not develop (invalid), peel away bottom of device label to inspect specimen volume. Refer to Notes and Troubleshooting.



Peel off to check the specimen when no wicking issue occurs

4 Read Results

Interpret results at 10 minutes. **Important:** If alcohol test is included refer to color reference card within kit to interpret results. Read only alcohol test at 3 minutes. See Notes and Troubleshooting if invalid results appear. If troubleshooting fails repeat test using a new device and collector.



Notes and Troubleshooting:

- Invalid results may occur, if the strips do not wick, **peel off the label** at the bottom of the device as marked to check if either there is enough specimen, or the oral fluid is too thick or viscous to run.
 - If strips do not appear to flow when there is enough oral fluid, or the oral fluid is too thick to run move the device back and forth several times across a flat, clean surface. Ensure the device remains upright. Do not tilt the device when the test is running before reading results.
 - Oral fluid tends to form air bubbles which sit at the bottom of the strip and prevent the strip from running. Gently tap the device on the table or counter surface popping the air bubble allowing capillary action to begin, thus initiating the test.
- The indicator strip has not turned red after 4 minutes. Some donors may have a dry mouth. Nerves may contribute to this. Rotate the swab in a circular motion while swabbing each area of the oral cavity until the saturation indicator activates.

